

Call Us [+254 755745140](tel:+254755745140) / +254 717945199

Email. info@vorsagroup.co.ke

Website : <https://www.vorsagroup.co.ke/>

[WhatsApp. +254 717945199](https://www.vorsagroup.co.ke/)



VorsaGroup
Real Estate

Refined living ~ where it matters!

ARIA Capital Residency redefines contemporary urban luxury. Set at the heart of Nairobi's premier business district, Upperhill,

ARIA offers a rare blend of serenity and city convenience. Here, refined living meets exceptional accessibility, placing you within minutes of Nairobi's most important corporate, social and lifestyle destinations.

200

~ Total Units

1, 2 & 3 Beds

~ Type of Units (All En-suite)

2027

~ Year of Completion

24 floors

~ 2 Basements, Ground, 22 Typical
& 2 Amenity Floors





Signature Interiors!





At ARIA, generous spaces are not a luxury — they are a signature.

Each residence is meticulously planned to deliver expansive layouts, natural flow and thoughtful detailing that reflect the lifestyle expectations of today's discerning investor and homeowner.

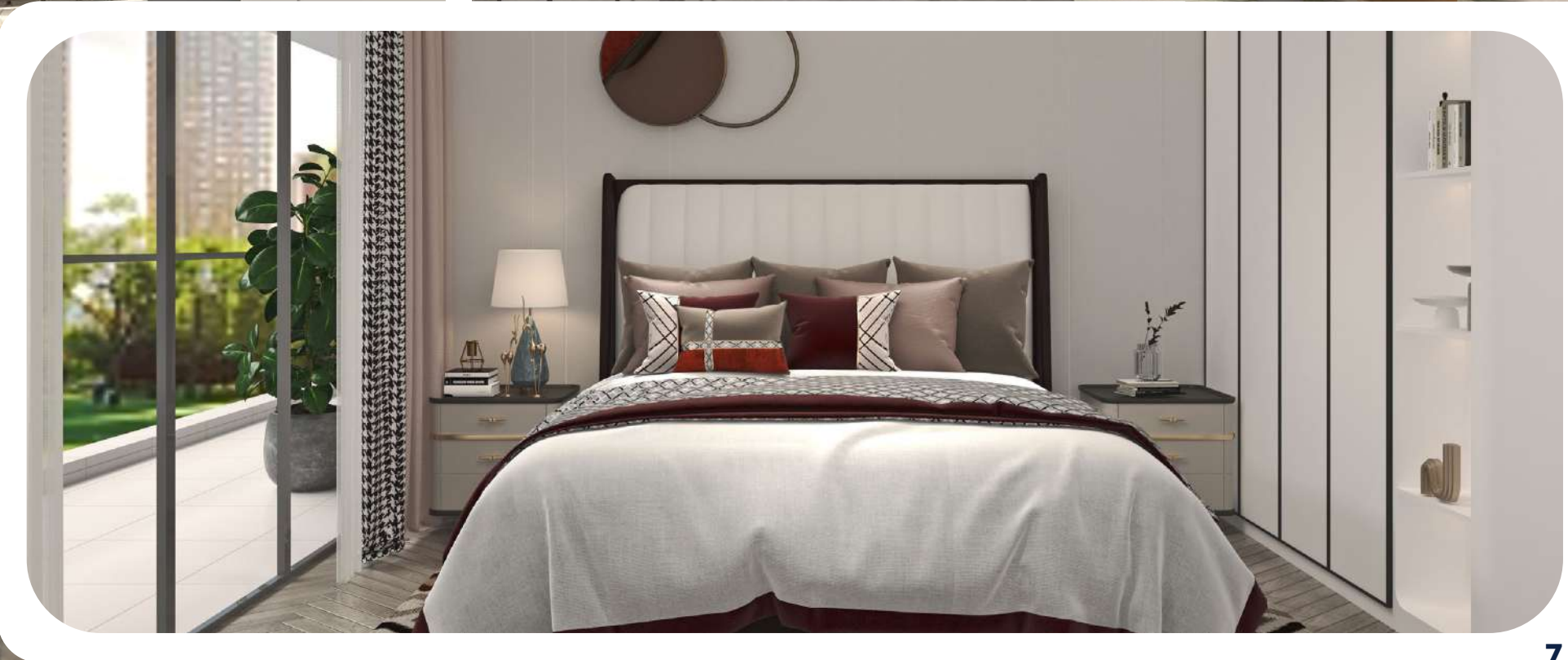




Designed for the modern urbanite, ARIA Capital Residency creates a sanctuary above the bustle; where every day begins with calm, clarity and comfort.

This is the home that positions you exactly where it matters most.





The Apartments

Designed with privacy, comfort and refined living in mind, ARIA Capital Residency features an exclusive floor configuration of only five apartments per block.

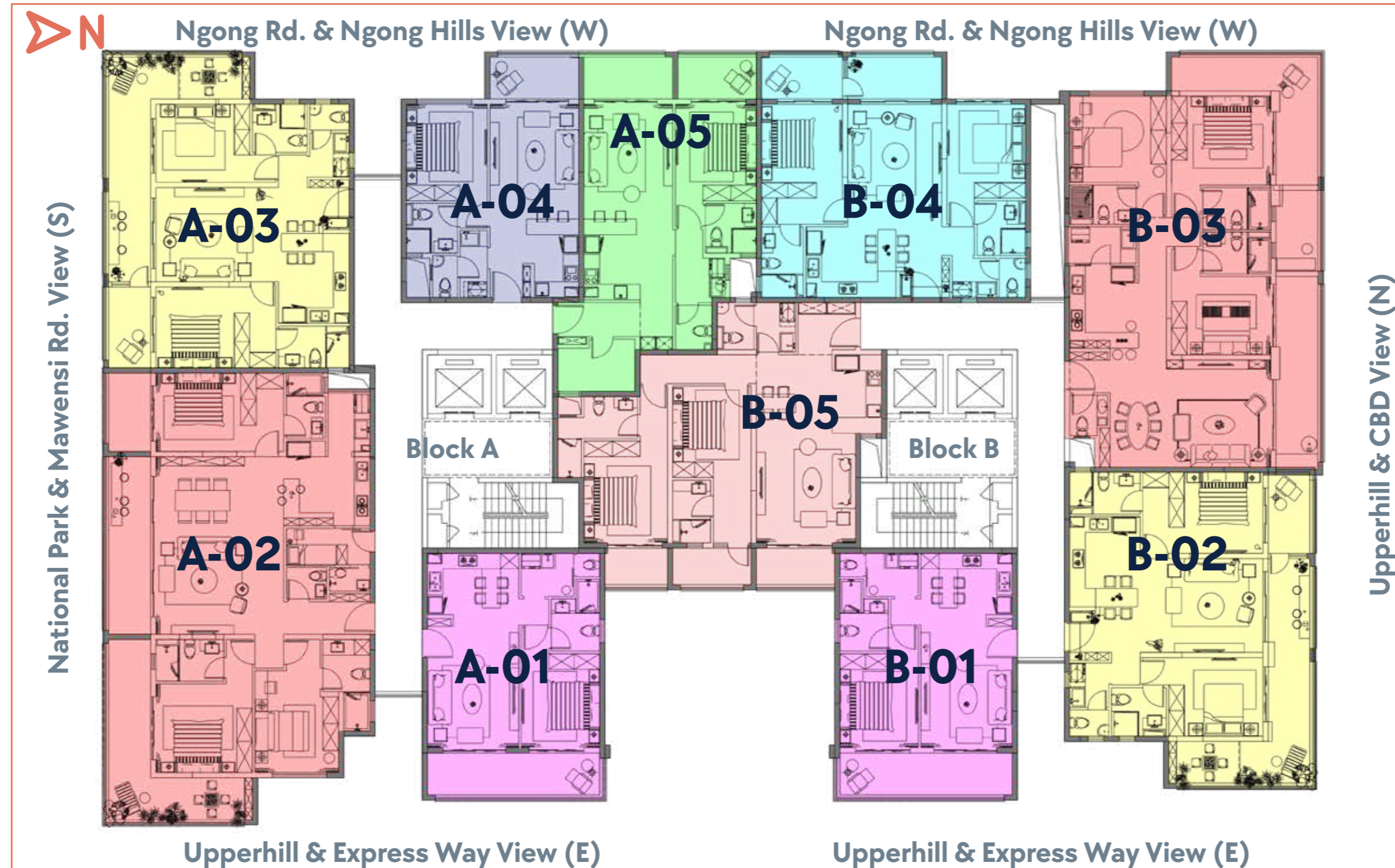
This low-density layout minimizes foot traffic and shared circulation, ensuring residents enjoy a quiet, private living environment rarely found in urban developments.

Each floor is thoughtfully structured to balance exclusivity with efficient access, offering homeowners a heightened sense of personal space.

Block A

Units facing WEST.

- Unit A-05
- Unit A-04



Block A

Units facing SOUTH - National Park.

- Unit A-03
- Unit A-02

Units facing EAST - Upperhill.

- Unit A-01

Block B

Units facing NORTH - CBD.

- Unit B-03
- Unit B-02

Units facing EAST - Upperhill

- Unit B-01
- Unit B-05

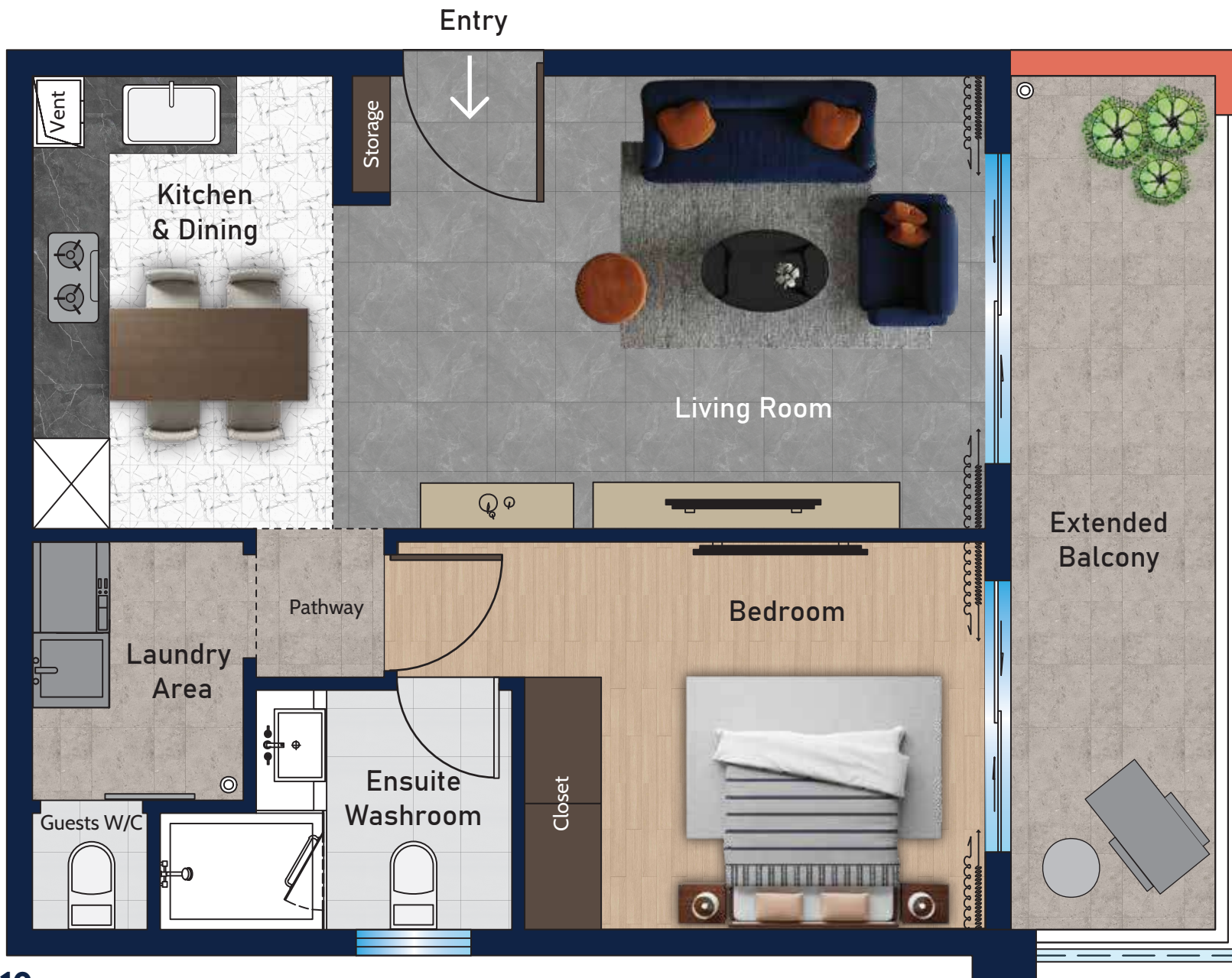
Units facing WEST - Ngong Hills.

- Unit B-04



UNIT A-01
One Bedroom

Area:
80 m² | 861.113 ft²



- ▶ Ensuite Bedroom
- ▶ Spacious Living Spaces
- ▶ Open kitchen
- ▶ Dedicated Laundry
- ▶ Guest Cloakroom
- ▶ Double Balcony



UNIT A-02

Three Bedroom + DSQ

Area:

194.62 m² | 2,094.87 ft²



- ▶ All Ensuite
- ▶ Spacious Living Spaces
- ▶ Triple Private Balconies
- ▶ Semi-Open Kitchen
- ▶ Master-Walk In Closet
- ▶ Ensuite DSQ



UNIT A-03
Two Bedroom

Area:
126 m² | 1,356.25 ft²



- ▶ All Ensuite Bedrooms
- ▶ Spacious Living Rooms
- ▶ Expansive Balconies
- ▶ Private Master Balcony
- ▶ Master-Walk In Closet
- ▶ Kitchen Breakfast Nook



UNIT A-04
One Bedroom

Area:
70 m² | 753.474 ft²



- ▶ Spacious Living Room
- ▶ Kitchen Breakfast Nook
- ▶ Well Lit Interiors
- ▶ Spacious Balcony
- ▶ Open Kitchen
- ▶ Dedicated Laundry



UNIT A-05

One Bedroom + Study

Area:

92 m² | 990.28 ft²



▶ Spacious Balcony Design

▶ Private Study

▶ Open Kitchen Layout

▶ Double Balcony

▶ Breakfast Nook

▶ Dedicated Laundry



UNIT B-01
One Bedroom

Area:
80 m² | 861.113 ft²



- ▶ Ensuite Bedroom
- ▶ Spacious Living Spaces
- ▶ Open Kitchen
- ▶ Dedicated Laundry
- ▶ Guest Cloakroom
- ▶ Double Balcony



UNIT B-02
Two Bedroom

Area:
126 m² | 1,356.25 ft²



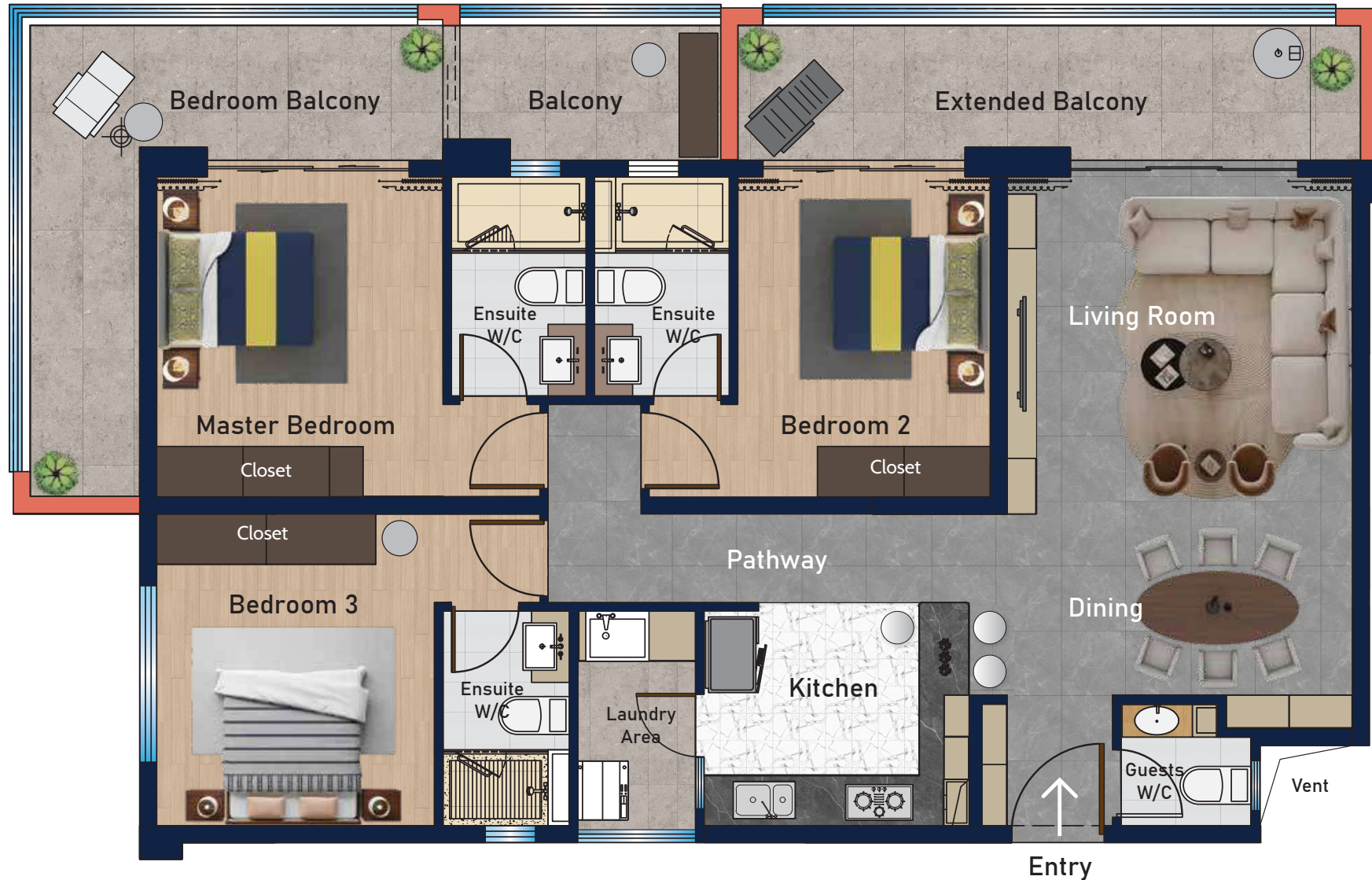
- ▶ All Ensuite Bedrooms
- ▶ Spacious Living Spaces
- ▶ Expansive Balconies
- ▶ Semi-Open Kitchen
- ▶ Master-Walk In Closet
- ▶ Dedicated Laundry



UNIT B-03
Three Bedroom

Area:
174.83 m² | 1,881.85 ft²

- ▶ All Ensuite Bedrooms
- ▶ Triple Private Balconies
- ▶ Spacious Dining
- ▶ Spacious Living Spaces
- ▶ Semi-Open Kitchen
- ▶ Dedicated Laundry





UNIT B-04
Two Bedroom

Area:
113.36 m² | 1,220.20 ft²



- ▶ All Ensuite Bedrooms
- ▶ Spacious Living Spaces
- ▶ Double Private Balconies
- ▶ Semi-Open Kitchen
- ▶ Spacious Dining
- ▶ Master-Walk In Closet



UNIT B-05
Two Bedroom

Area:
129.8 m² | 1,397 ft²



- ▶ Triple Private Balconies
- ▶ Spacious Living Spaces
- ▶ Open Kitchen Layout
- ▶ Well Lit Interiors
- ▶ Dedicated Laundry

Amenities to live for!

ARIA's resident-only amenities are curated to elevate wellbeing, convenience and community living. Spanning the entire rooftop, this private sanctuary in the sky offers spaces designed to rejuvenate the mind, restore the body and inspire connection.

Social Amenities

- ▶ Heated Swimming Pool
- ▶ Fully Equipped Gym
- ▶ Sauna
- ▶ Yoga Room
- ▶ Children's Play Area
- ▶ Cafeteria
- ▶ Party Room
- ▶ Library
- ▶ Mini Mart



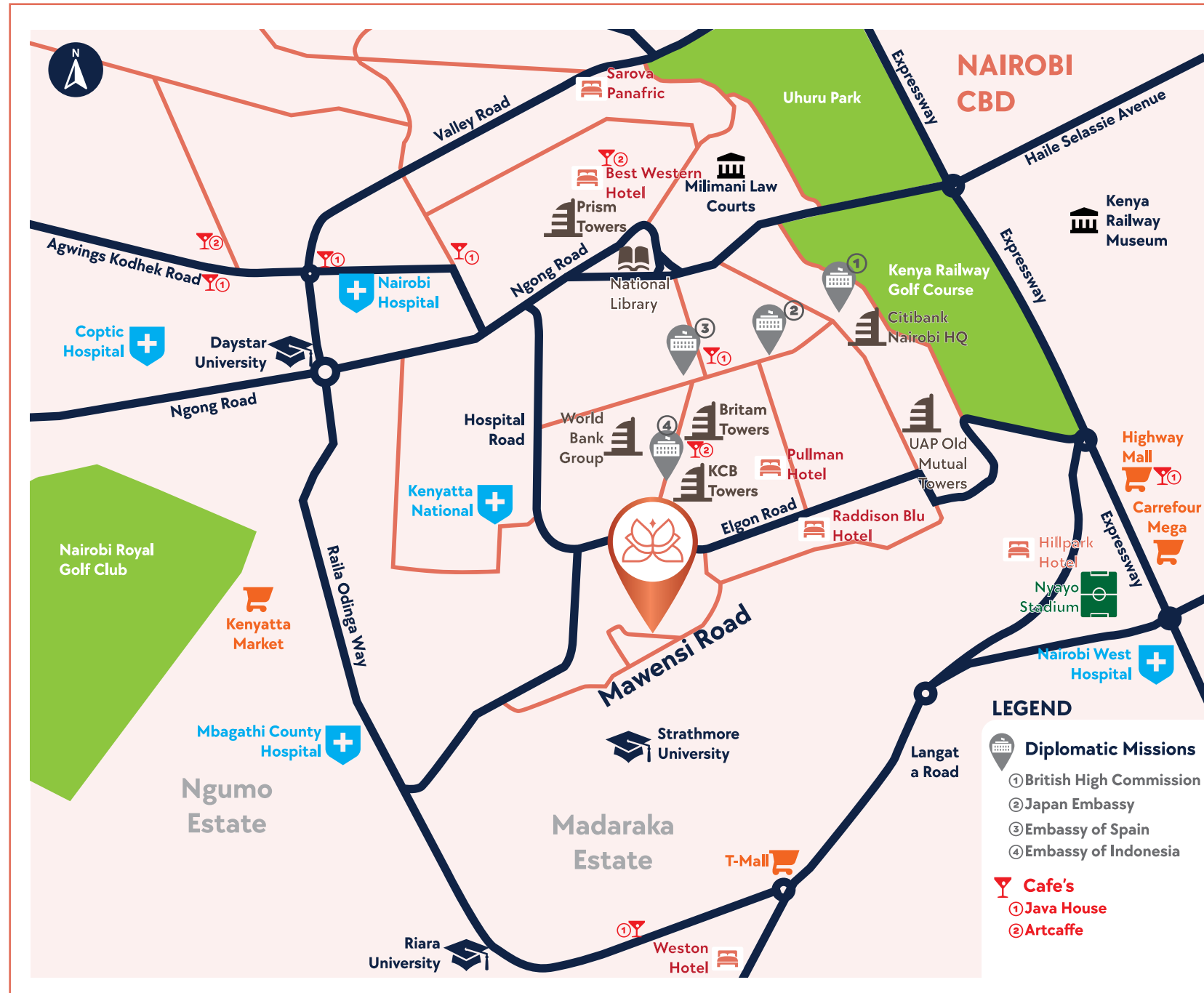


Refined City Living!

Nairobi business district at your doorstep

Positioned in Upperhill, Nairobi's most prestigious commercial district, ARIA provides unrivaled proximity to the city's leading corporate headquarters, hospitals, hotels and lifestyle amenities.

This prime address ensures unmatched convenience and connectivity, making everyday life seamless.



A Proven Developer



Elemental Terra
Developers Ltd.

Elemental Terra Ltd, the developer of ARIA Capital Residency is a distinguished property group with over 10 years of experience delivering boutique residential apartment projects across Nairobi. Known for meticulous planning, on-schedule delivery and a commitment to quality; we have built a solid reputation among homeowners and investors alike. Our portfolio projects include:



Enzi Heights

📍 Nextgen, Mombasa Rd.

🏠 Executive 1, 2 & 3 Bed Apartments

✅ Completed - 2021



Capital Rise

📍 Menelik Rd, Kilimani

🏠 Executive 2 & 3 Bed Apartments

✅ Completed - 2024



Capital Garden

📍 George Padmore Rd, Kilimani

🏠 Executive 1, 2 & 3 Bed Apartments

✅ Ongoing - Completion 2026