

Call Us [+254 755745140](tel:+254755745140) / +254 717945199

Email. [info@vorsagroup.co.ke](mailto:info@vorsagroup.co.ke)

Website : <https://www.vorsagroup.co.ke/>

[WhatsApp. +254 717945199](https://www.vorsagroup.co.ke/)



**VorsaGroup**  
Real Estate



# VISIONARY LIVING TIMELESS STYLE

WHERE FLUID CURVES MEET BOLD GEOMETRIC FORMS, AND SLEEK METAL LINES TRACE THE CONTOURS WITH PRECISION. ANCHORED BY A DARK STONE BASE, THE DESIGN OF LUMINARA EMBODIES A REFINED, MODERN AESTHETIC—SCULPTURAL IN ITS ARTISTIC EXPRESSION, YET EXUDING A SENSE OF GRANDEUR AND COMPOSURE.

# ABUNDANT LIFESTYLE AMENITIES



Modern  
1 & 2-Bedroom  
Residences



Stylish Café  
& Social Lounge



Secure &  
Spacious  
Parking



24/7  
Concierge  
Reception



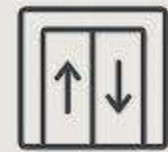
Sky Lounge  
& Restaurant



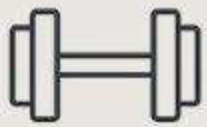
Infinity  
Rooftop Pool



Convenience  
Service Store



Four High  
Speed Lifts



Fitness &  
Wellness Studio



Round-the-Clock  
Security



Vertical  
Courtyard



Reliable  
Power Backup

LUMINARA  
WESTLANDS





# HOTEL INSPIRED ARRIVAL EXPERIENCE

CRAFTED TO RIVAL THE ELEGANCE OF A LUXURY HOTEL, THE GRAND LOBBY OFFERS A SENSE OF PRESTIGE, COMFORT, AND SOPHISTICATION. BEYOND A TRADITIONAL RESIDENTIAL ENTRANCE, IT PROVIDES SPACES FOR SOCIALIZING, RELAXING, WAITING, AND WELCOMING GUESTS WITH STYLE.

LUMINARA  
WESTLANDS



WHERE COFFEE MEETS  
BUSINESS ELEGANCE

IN THE HEART OF THE CITY, A PRIVATE RETREAT OF  
CALM AND STYLE AWAITS. BLENDING CAFÉ WARMTH  
WITH BUSINESS EFFICIENCY, EVERY MOMENT IS  
CRAFTED FOR DISCERNING PROFESSIONALS

LUMINARA  
WESTLANDS

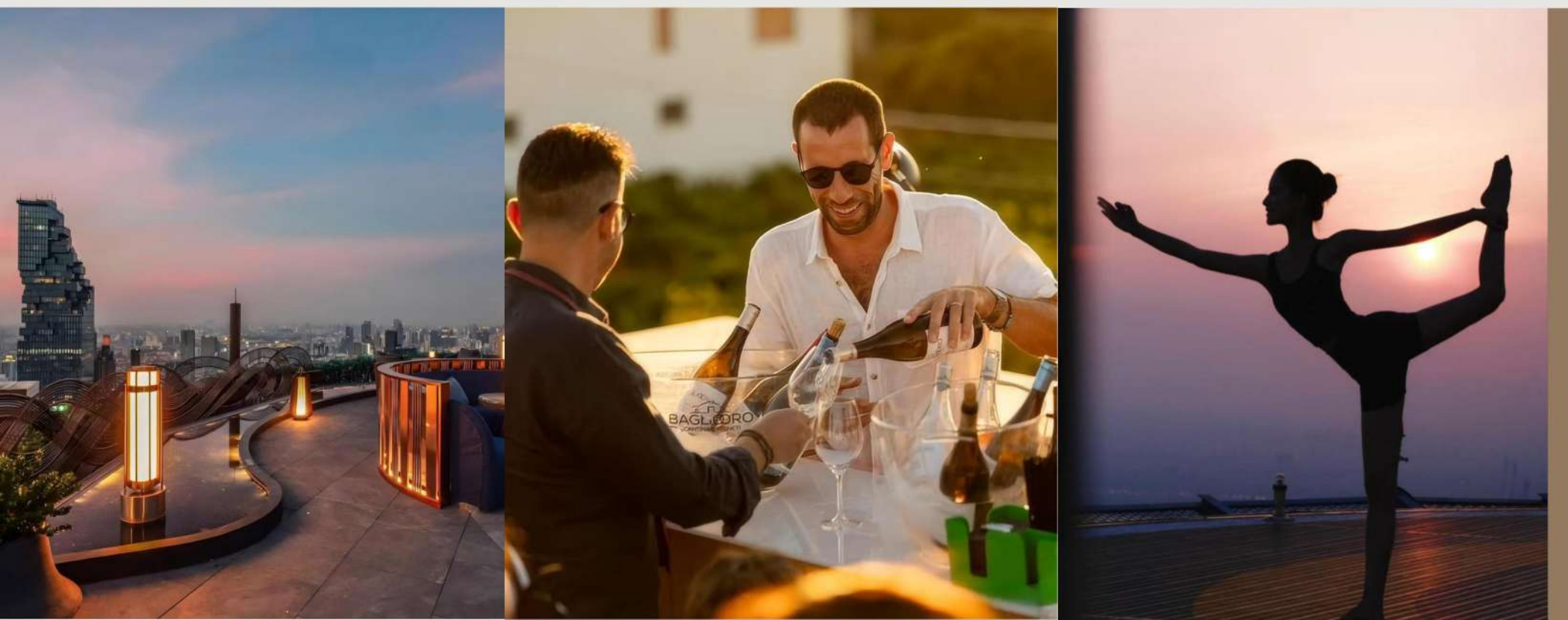
# ULTIMATE LUXURY OF HIGH-END SERVICED RESIDENCES

THE INFINITY POOL VISUALLY MERGES WITH THE SKY  
AND CITYSCAPE, CREATING THE BREATHTAKING  
ILLUSION OF SWIMMING TOWARD THE HORIZON.

LUMINARA  
WESTLANDS

# THE AESTHETICS OF BOUNDLESS VISION

THE ROOFTOP CLUBHOUSE IS AN “URBAN OASIS IN THE SKY,” WHERE PRIVACY MEETS OPENNESS, AND NATURE BLENDS WITH THE CITY. IT EMBODIES A LIFESTYLE BEYOND MERE DECORATION—ONE THAT CONNECTS WITH THE SKY AND BREATHES IN HARMONY WITH THE URBAN LANDSCAPE.



LUMINARA  
WESTLANDS



# THE SKY LOUNGE BEYOND DINING

“ A ROOFTOP HAVEN WHERE FINE  
DINING MEETS VIBRANT CITY  
LIVING—AN ELEVATED LIFESTYLE  
EXPERIENCE BEYOND THE  
ORDINARY.”

LUMINARA  
WESTLANDS



LUMINARA  
WESTLANDS

# YOUR PRIVATE WELLNESS RETREAT

PERCHED ABOVE THE CITY WITH SWEEPING  
VIEWS, IT'S A PLACE TO RECHARGE FROM  
SUNRISE TO SUNSET—MORE THAN FITNESS, A  
SOCIAL LOUNGE FOR CONNECTION AND  
LIFESTYLE

LUMINARA  
WESTLANDS



SKY GARDEN ATRIUM  
A HOME IN THE URBAN  
FOREST

# WHERE CITY AND SOPHISTICATION MEET

An open-plan LDK anchors the home, with every detail crafted for a perfect balance of function and style.



LUMINARA  
WESTLANDS



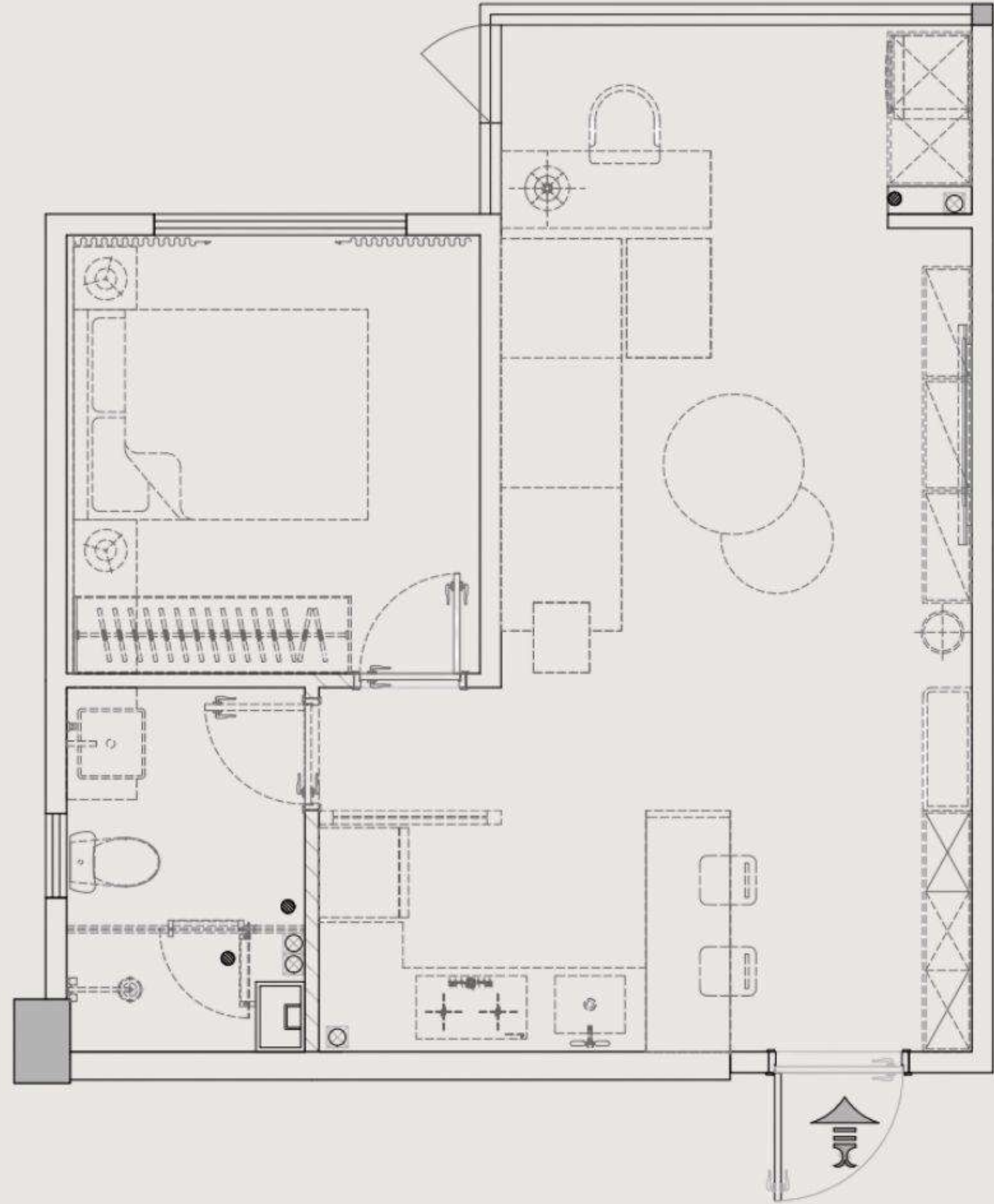
# NEW STANDARD OF COMFORT

Modern, refined living that balances style with ease. Spacious interiors and abundant light create a home of true luxury.

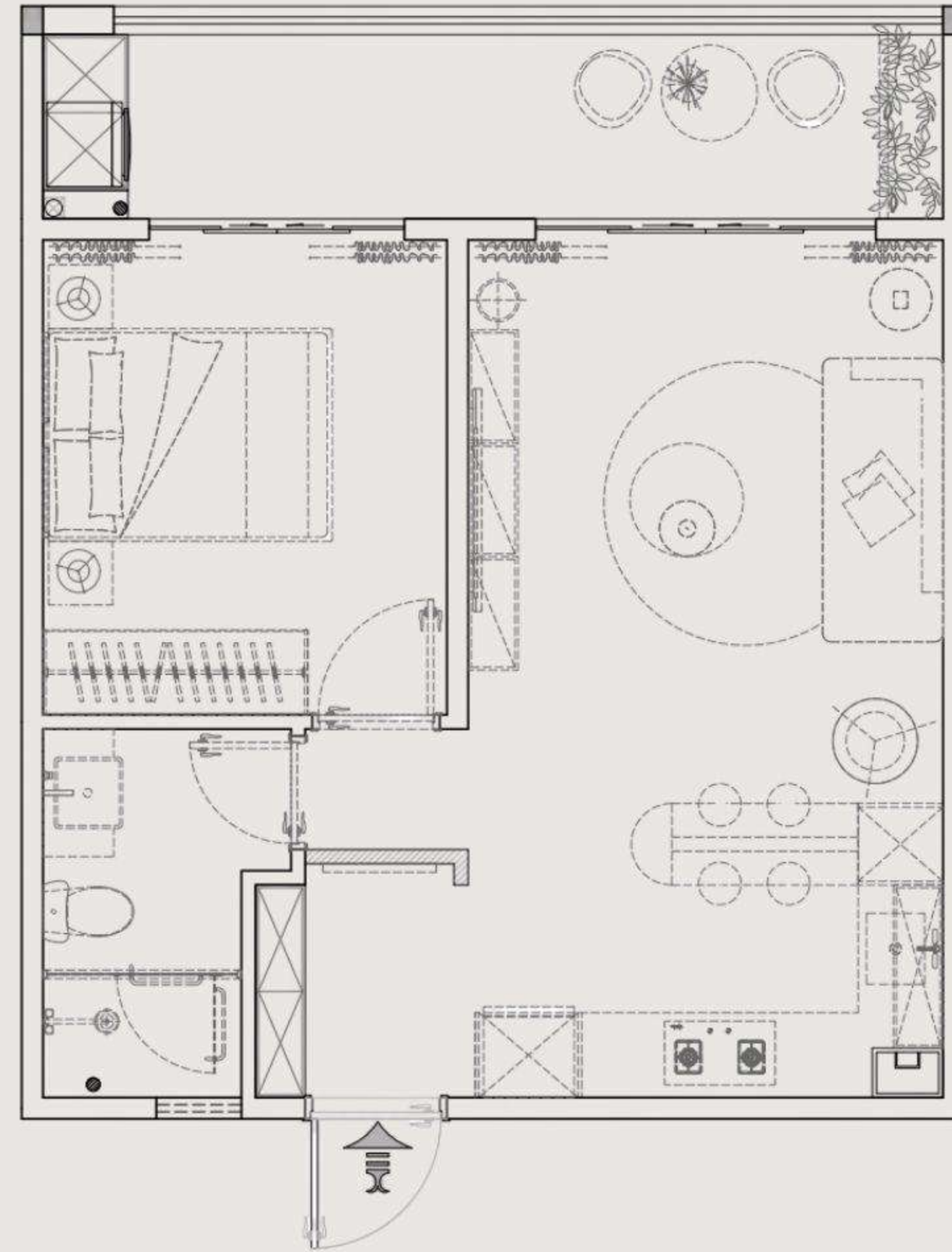


LUMINARA  
WESTLANDS

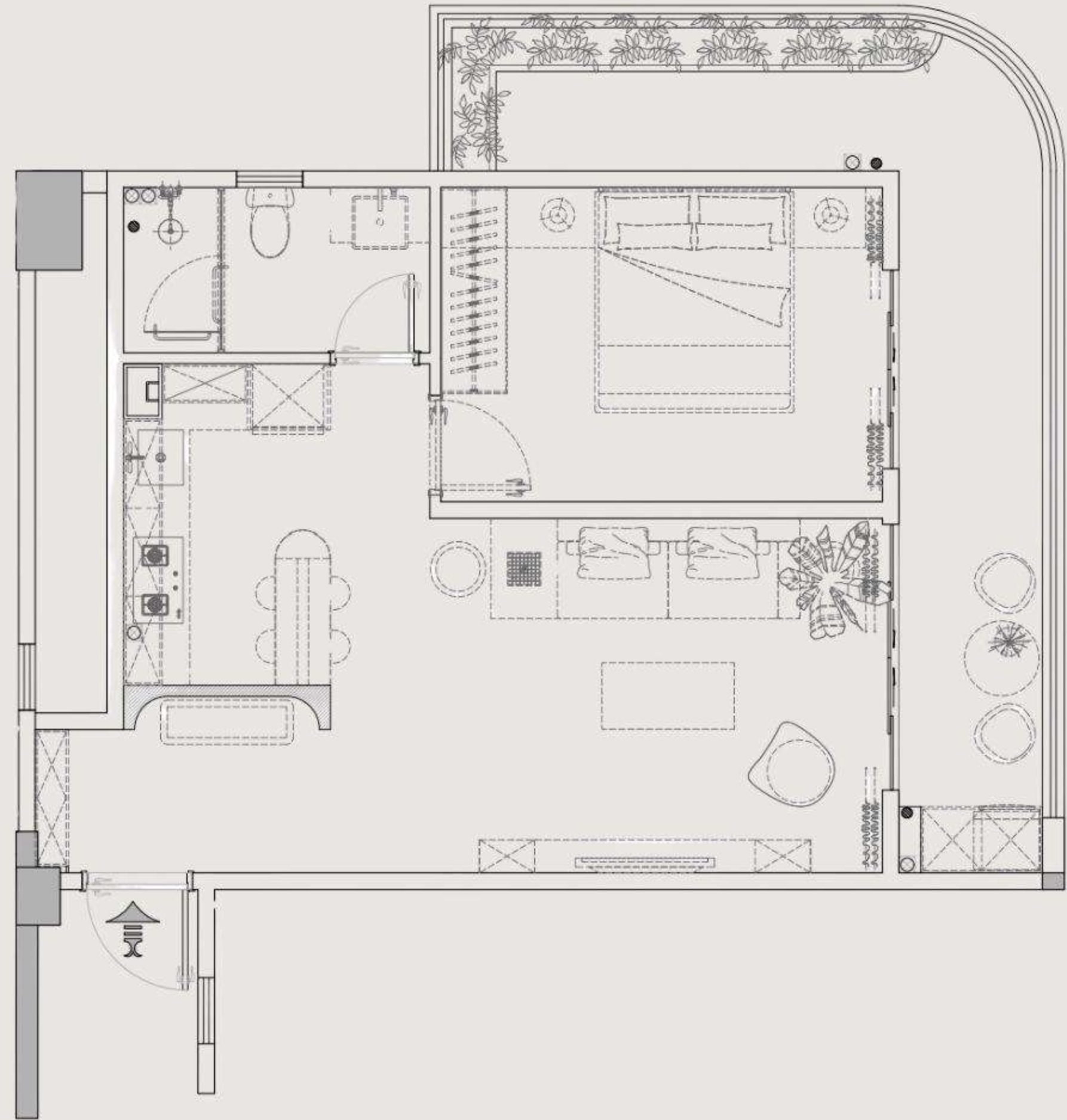




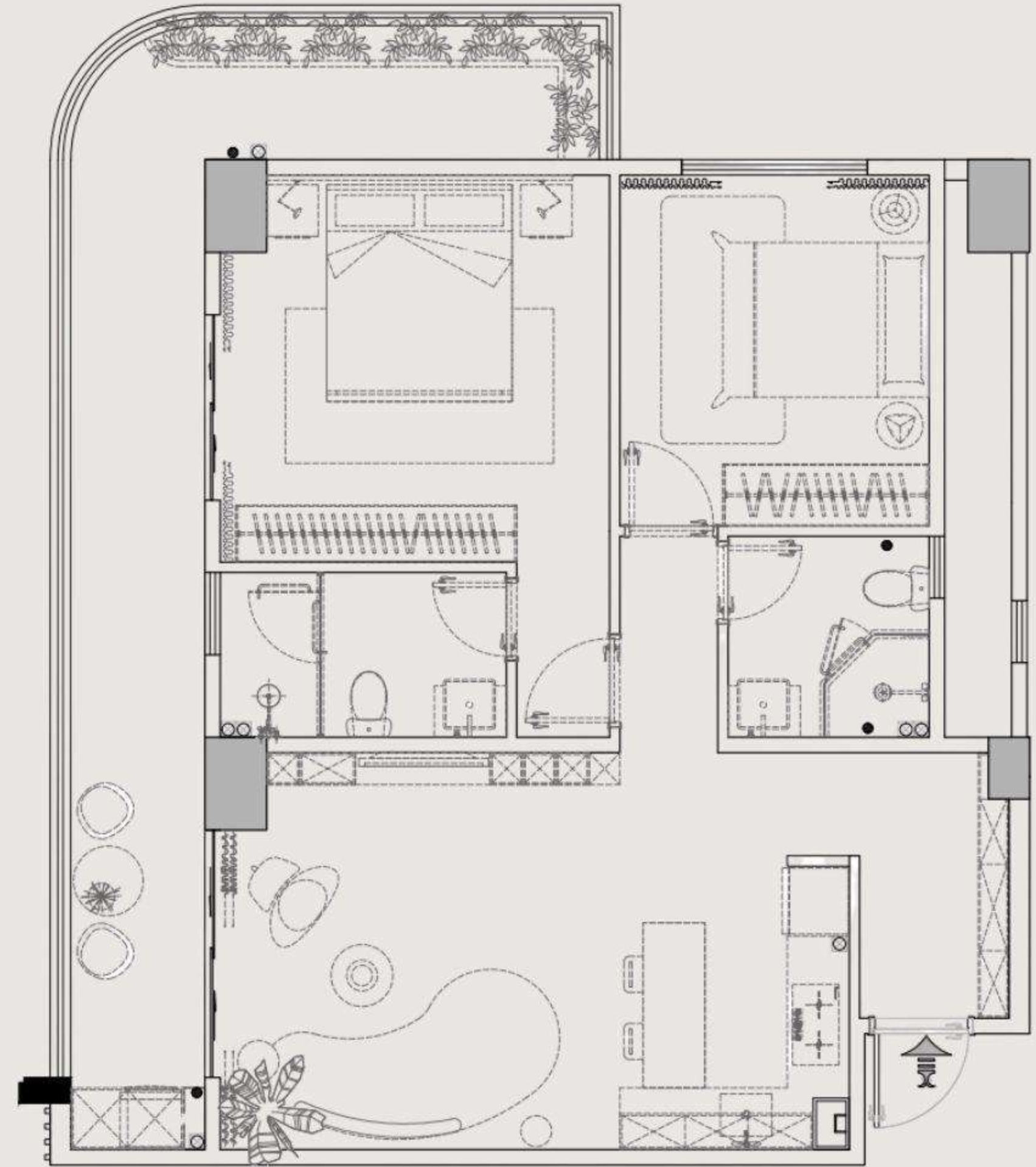
ONE BED COMFORT FLOOR PLAN  
56 SQ.M/603 SQ.F



ONE BED PREMIUM FLOOR PLAN  
65 SQ.M/700 SQ.F

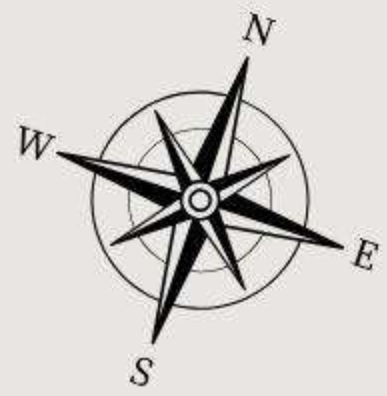


ONE BED LUXURY FLOOR PLAN  
82 SQ.M/883 SQ.F

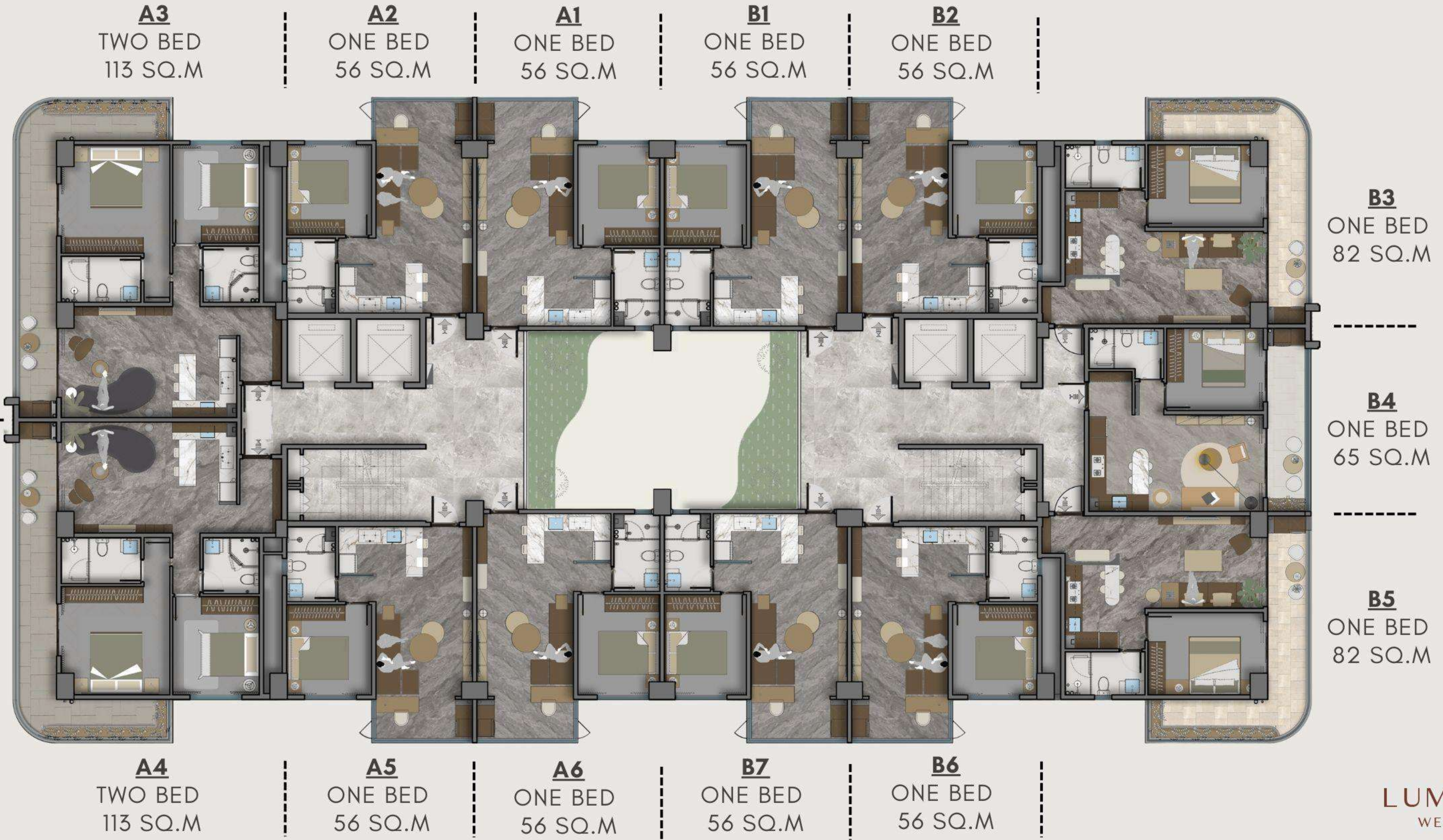


TWO BED LUXURY FLOOR PLAN  
113 SQ.M/1216 SQ.F

# FLOOR PLAN



MOGOTIO ROAD



**A3**  
TWO BED  
113 SQ.M

**A2**  
ONE BED  
56 SQ.M

**A1**  
ONE BED  
56 SQ.M

**B1**  
ONE BED  
56 SQ.M

**B2**  
ONE BED  
56 SQ.M

**B3**  
ONE BED  
82 SQ.M

**B4**  
ONE BED  
65 SQ.M

**B5**  
ONE BED  
82 SQ.M

**A4**  
TWO BED  
113 SQ.M

**A5**  
ONE BED  
56 SQ.M

**A6**  
ONE BED  
56 SQ.M

**B7**  
ONE BED  
56 SQ.M

**B6**  
ONE BED  
56 SQ.M

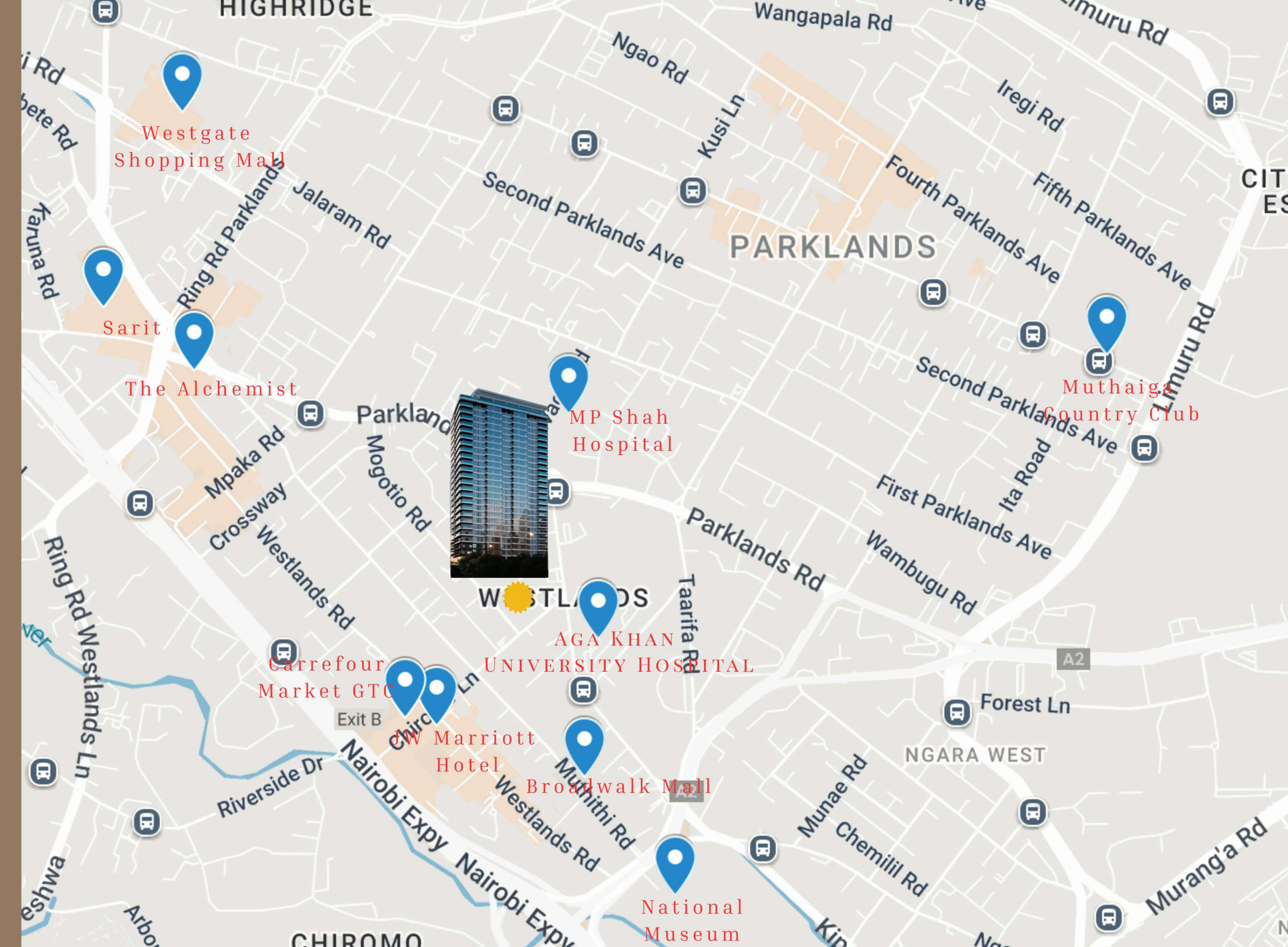
**LUMINARA**  
WESTLANDS

# GROUND PLAN



# ROOF PLAN





# CITY CONNECTIONS

- 📍 Sarit
- 📍 Westgate Shopping Mall
- 📍 MP Shah Hospital
- 📍 The Alchemist
- 📍 Broadwalk Mall
- 📍 JW Marriott Hotel Nairobi
- 📍 Carrefour Market GTC
- 📍 Parklands Sports Club
- 📍 National Museum of Kenya
- 📍 Aga Khan University Hospital
- 📍 Muthaiga Country Club