

Call Us [+254 755745140](tel:+254755745140) / +254 717945199

Email. info@vorsagroup.co.ke

Website : <https://www.vorsagroup.co.ke/>

[WhatsApp. +254 717945199](https://www.vorsagroup.co.ke/)



VorsaGroup
Real Estate

AMETMYST

TOGETHER WE DREAM

THE FUTURE OF
KILIMANI REAL ESTATE

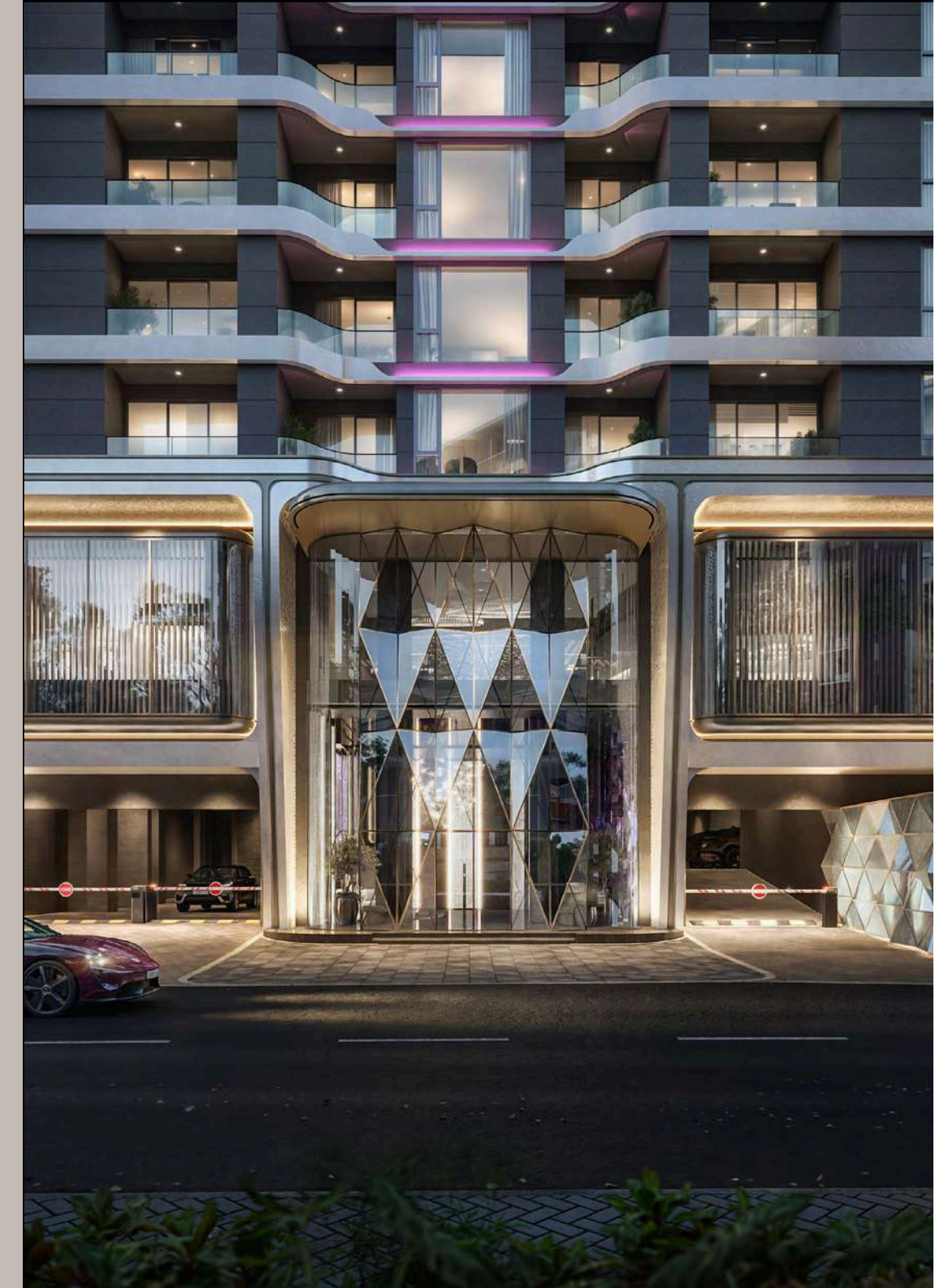
The team behind Emerald Springs returns with Amethyst, the evolution of a promise. This new project redefines what's possible in Kilimani's market. Positioned on Maalim Juma Road, it is designed to hold value, attract demand, and stay ahead of the curve. Every decision behind Amethyst reflects a step forward, sharper design, a stronger location, and a clearer vision. It is more than another development; it is the next benchmark in Kilimani.





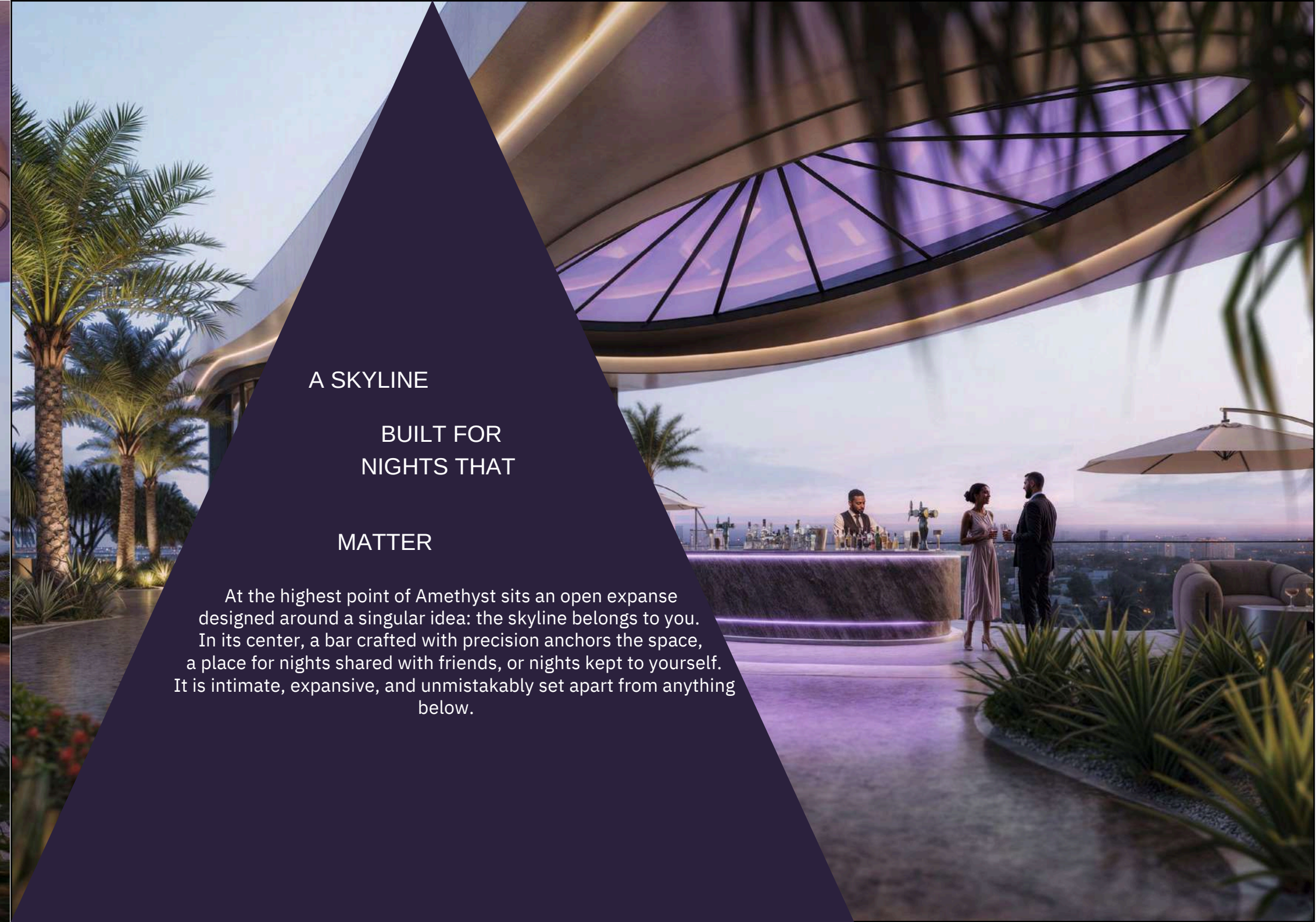
The entrance at Amethyst sets the tone from the very first step, bold, refined, and unlike anything else on Maalim Juma Road. It's a space that instantly signals distinction, where every line and finish reflects a lifestyle that is not only high-end, but rare.

THE FIRST STEP INTO AMETHYST TELLS THE STORY. THIS IS AN ENTRANCE THAT SPEAKS BEFORE YOU DO





The courtyard at Amethyst is not just a garden, it is structure made green. Paths, plants, and spaces to sit are arranged to create a rhythm of stillness. It stands as a place that anchors the project and gives it permanence.



A SKYLINE

BUILT FOR
NIGHTS THAT

MATTER

At the highest point of Amethyst sits an open expanse designed around a singular idea: the skyline belongs to you. In its center, a bar crafted with precision anchors the space, a place for nights shared with friends, or nights kept to yourself. It is intimate, expansive, and unmistakably set apart from anything below.



THE ROOFTOP GARDEN ABOVE THE CITY, IS MADE FOR QUIET WALKS AND UNHURRIED MOMENTS. PATHWAYS LEAD TO SEATING SET IN JUST THE RIGHT PLACES - SPACES FOR, REFLECTION, OR CONVERSATIONS THAT LINGER.

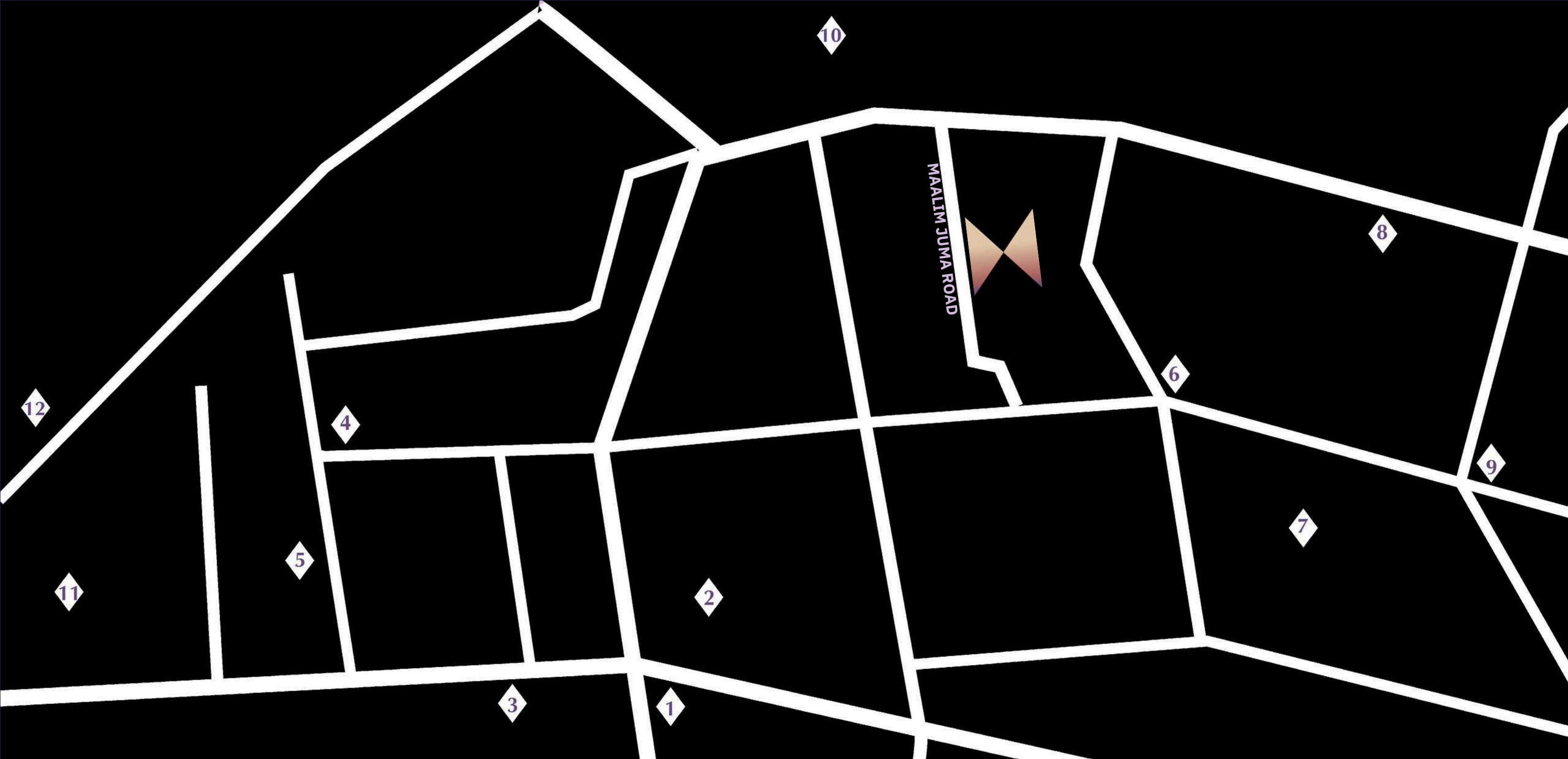


THE ROOFTOP POOL TRACES THE EDGE OF AMETHYST, WRAPPING THE BUILDING IN WATER AND VIEWS. EACH LAP IS FRAMED BY THE SKYLINE, EACH PAUSE A REMINDER THAT THE CITY STRETCHES BENEATH YOU.



Life at Amethyst is defined by choice and elevation, quiet garden walks, evenings by the rooftop bar, laps in a pool that floats above the city, and interiors that welcome you with distinction from the entrance to the lobby. Every space is designed to match the rhythm of a high-end lifestyle





SURROUNDED BY
WHAT MATTERS

- 1. YAYA CENTRE
- 2. KILIMANI MALL
- 3. WOODLANDS MALL
- 4. ANKOLE GRILL KILIMANI
- 5. FOGO GAUCHO KILIMANI
- 6. LIGHT INTERNATIONAL SCHOOL
- 7. KILIMANI INTERNATIONAL SCHOOL
- 8. KIOTA SCHOOL
- 9. THE ROYALE HOUSE RESTAURANT
- 10. KILIMANI CHILDRENS' CLINIC
- 11. MANARAT INTERNATIONAL SCHOOL
- 12. AAR HEALTHCARE LAVINGTON

Amethyst sits on Maalim Juma Road in Kilimani, a neighborhood that blends calm residential streets with unmatched accessibility. Within minutes, you find Yaya Centre, Kilimani Mall, and top international schools such as Light International School. Medical care is just around the corner with AAR Healthcare, while dining destinations like Fogo Gaucho and Ankole Grill put the city's finest at your doorstep. It is location, refined into opportunity.

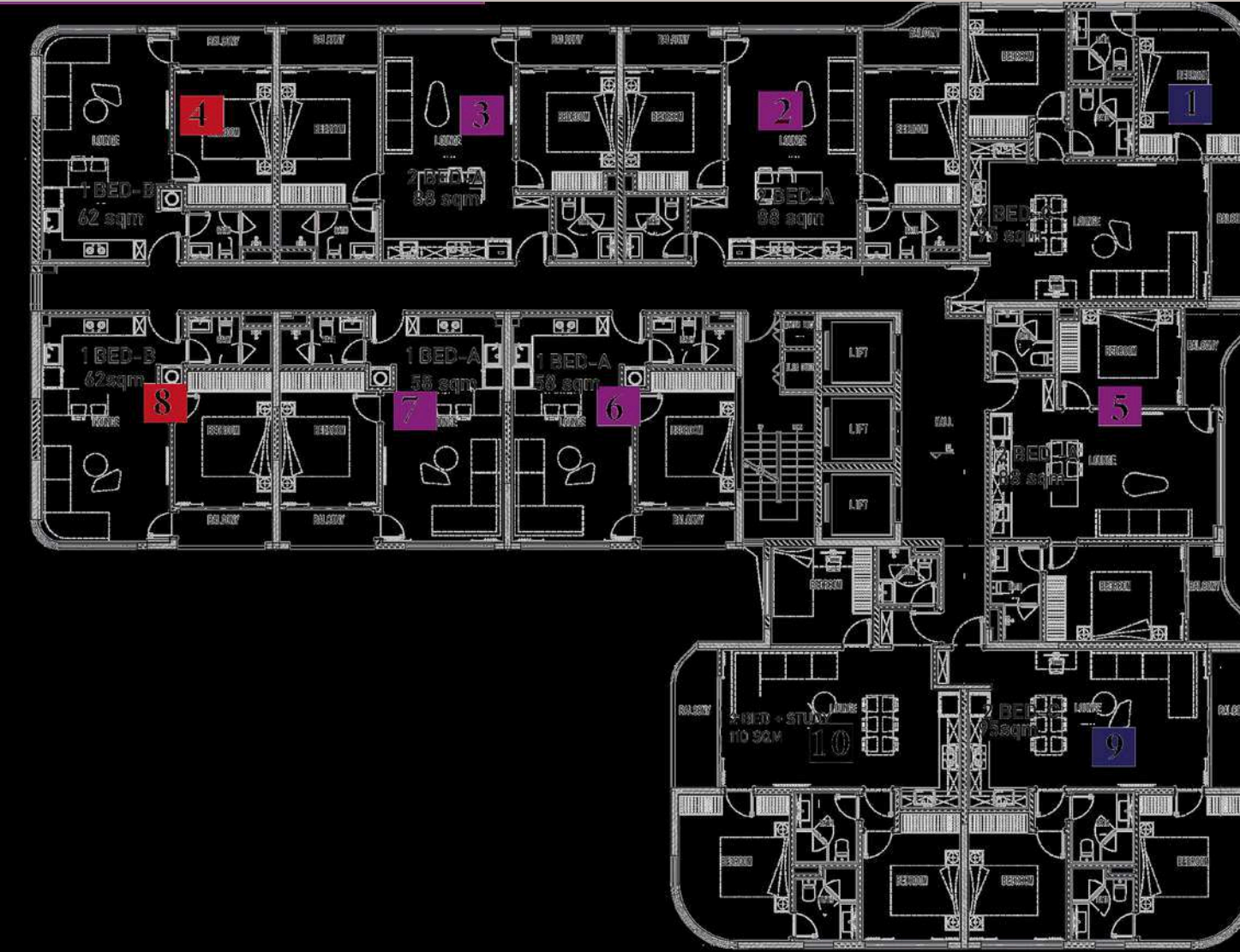
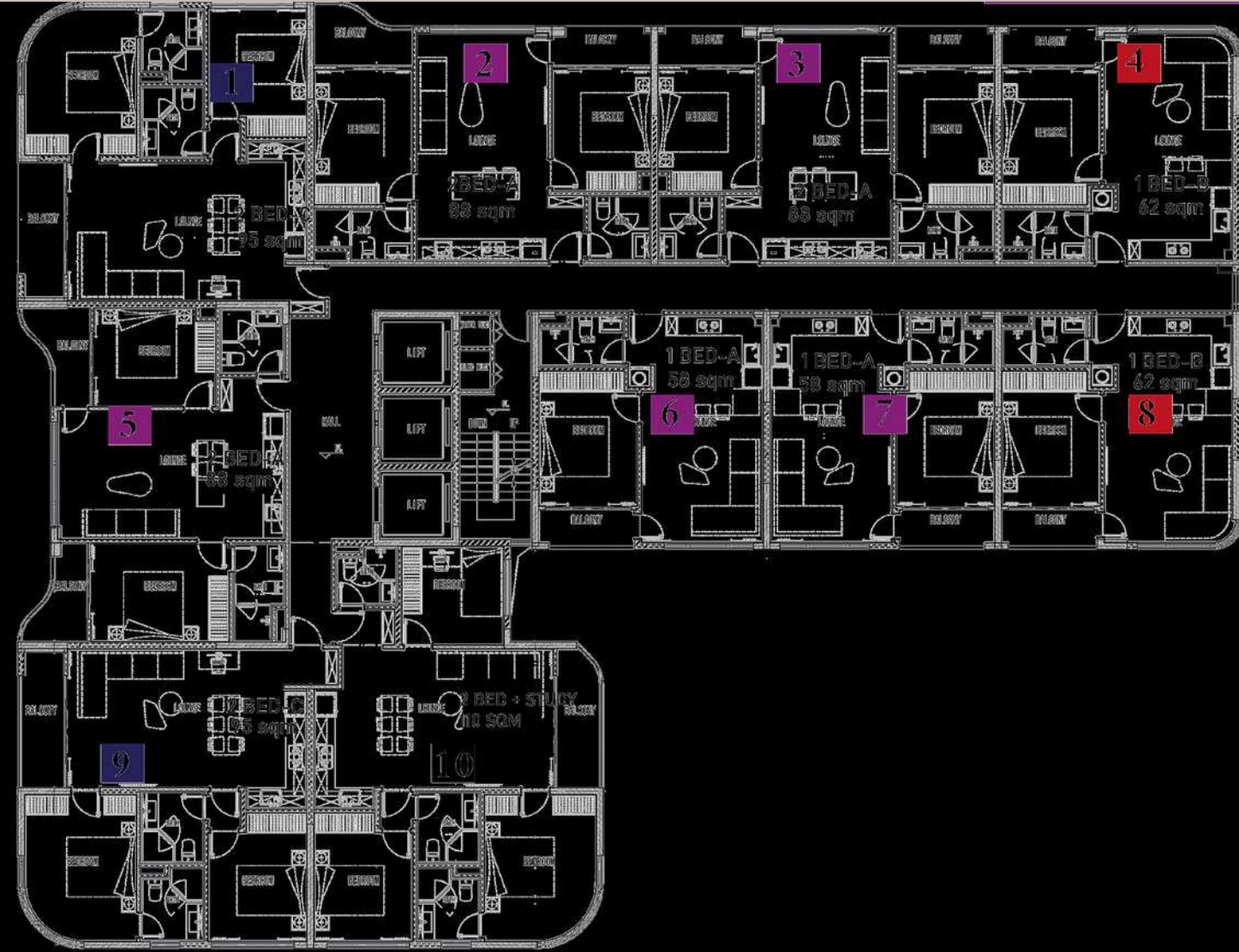
POSITIONED AT THE CENTER OF KILIMANI'S MOST CONNECTED LIFESTYLE



NATIONAL PARK/NGONG RD/NGONG HILLS

CB D/ARB
O RETU
M /GTC

UNIT TYPES

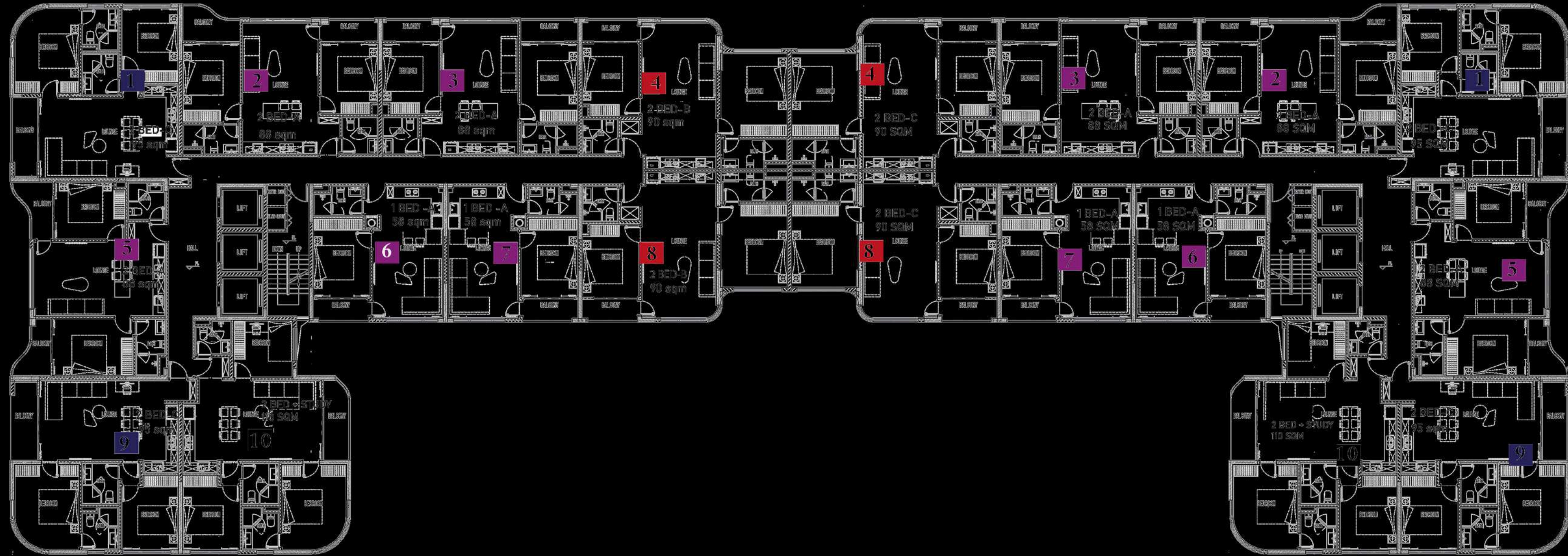


NG HILLS

ARBORETUM/STATE HOUSE/KILELESHWA

NATIONAL PARK/NGONG RD/NGONG HILLS

CB D/ARB
O RETU
M /GTC



NG NG HILLS

ARBORETUM/STATE HOUSE/KILELESHA



THE TEAM

DEVELOPER
GY GROUP REAL ESTATE

MARKETING AND DEVELOPMENT CONCEPT
KARIM CG VISUALS